



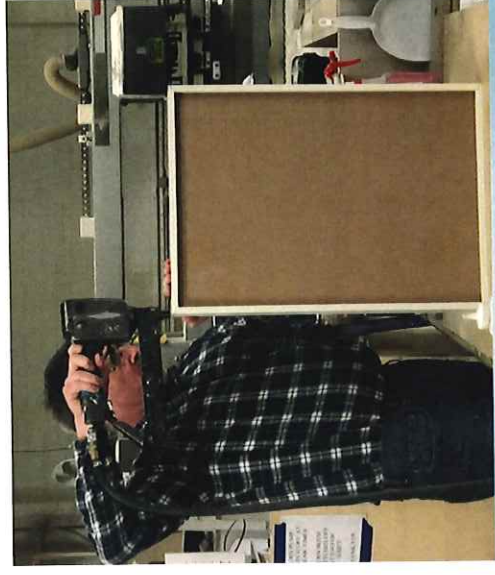
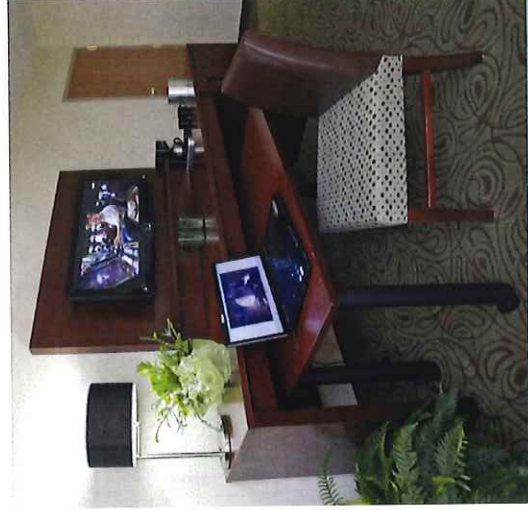
Schilling Schu Industries

453 5th Street , Random Lake (West Plant)  
200 Woodland, Random Lake, WI  
(East Plant)

Phone: 920-994-9528  
schuindustries.com



Join our Team!!



If you're interested in building a career and being part of a growing, rapidly improving and changing work environment, we have the place for you!



**Schilling Schu Industries**  
is a dynamic  
manufacturing company  
that provides furniture  
and displays for the  
hospitality, health care,  
education and retail  
markets.



## Current Openings:

### Assembly/Machine Operator

The position of Machine Operator / Assembly has the opportunity to be trained, in a rotational program, with production equipment along with working in an assembly cell environment. There is unlimited opportunities for growth and development.

#### Skills:

Work in multiple stations between different equipment in Assembly cells and Machinery.

Maintain excellent work attendance.

Mechanical ability to use small hand tools (drills, staple guns etc). Ability to work independently and in a team.

We offer a full benefit package including medical, dental, 401k and more?

Pay is based upon experience-starting at \$13-\$15 per hour.

Apply online at:  
[schuindustries.com/join-the-schu-team/](http://schuindustries.com/join-the-schu-team/)



Schilling Schu designs, engineers, manufactures, delivers and supports high-quality wood case goods and furniture for discerning customers in multiple industries, located across the country and around the world.

Over the past four decades, we've grown to become a leader through strategic vision, hard work and quality craftsmanship. Today, Schilling Schu serves and satisfies the needs of customers ranging from Fortune 500 corporations to startups.

With a talented team of professionals providing design, engineering, manufacturing, sales and service, we have the skills and dedication to earn and grow long-term relationships. With production facilities totaling more than 100,000 square feet, we have the capacity to build virtually any project.

